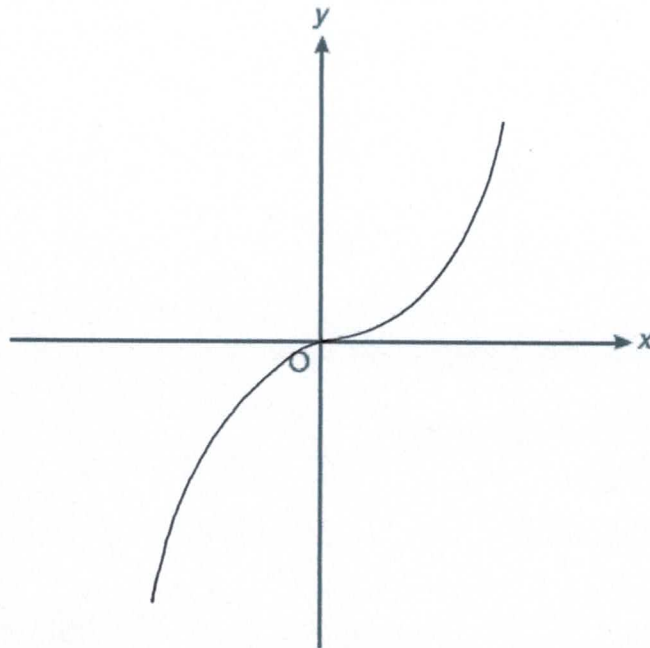


Quadratic & Cubic Graphs (H & F)

A collection of 9-1 Maths GCSE Sample and Specimen questions from AQA, OCR, Pearson-Edexcel and WJEC Eduqas.

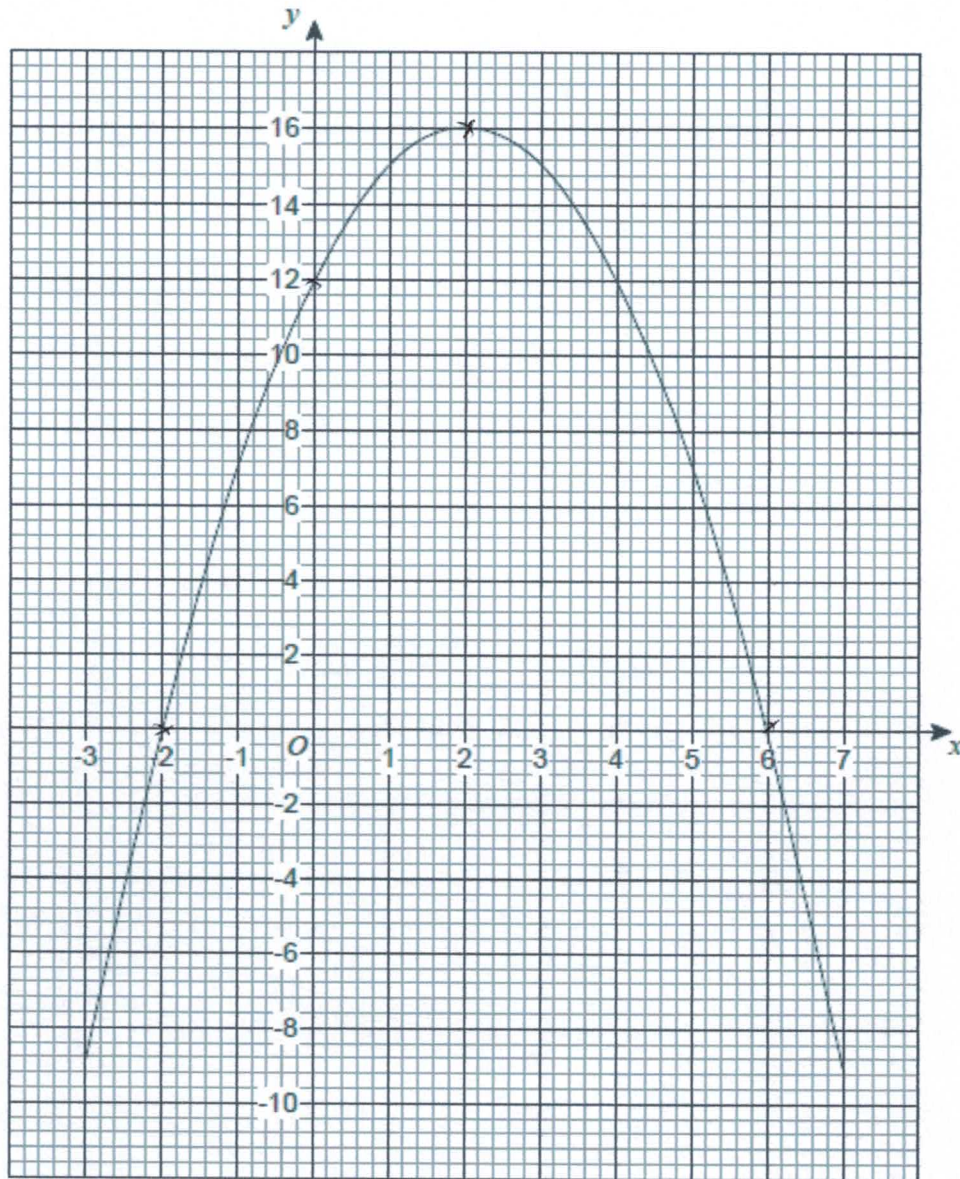
Name:	Glyn Brown
Total Marks:	

1. Sketch a graph on the axes below that shows $y = x^3$.



[2]

2. The graph $y = a + bx - x^2$ is shown.



(a) Circle the coordinates of the turning point of the curve.

- (-2, 0) (0, 12) (2, 16) (6, 0)

[1]

(b) Circle the value of a.

- 2 12 16 6

[1]

(c) Circle the two roots of $a + bx - x^2 = 0$

- 2 and 6 2 and -6 2 and 6 -2 and -6

[1]